

Acta Crystallographica Section E

Structure Reports

Online

ISSN 1600-5368

***N'*-(Diphenylmethylene)-2-hydroxybenzohydrazide**Yanfei Li,^{a*} Chunhua Chen,^b Rongdong Yang^a and Rengao Zhao^a^aDepartment of Materials and Chemical Engineering, Taishan University, 271021 Taian, Shandong, People's Republic of China, and ^bNo. 1 Middle School of Qufu, 273100, Shandong, People's Republic of China
Correspondence e-mail: klsz79@163.com

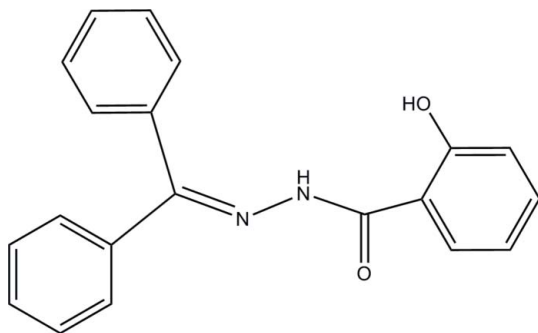
Received 10 January 2009; accepted 25 February 2009

Key indicators: single-crystal X-ray study; *T* = 273 K; mean $\sigma(\text{C}-\text{C})$ = 0.006 Å; *R* factor = 0.072; *wR* factor = 0.255; data-to-parameter ratio = 13.5.

In the title compound, C₂₀H₁₆N₂O₂, intramolecular N—H···O and intermolecular O—H···O hydrogen bonds are found. The intermolecular hydrogen bonds link the molecules into an infinite chain along the *c* axis. The dihedral angles between the aromatic rings are 16.9 (3), 80.8 (3) and 64.6 (3)°

Related literature

For the multiple-coordination environment of 2-hydroxybenzohydrazide and its derivatives, see: Chang (2008); Huo *et al.* (2004).

**Experimental***Crystal data*C₂₀H₁₆N₂O₂
M_r = 316.35
Tetragonal, *I*4₁/*a*
a = 16.5157 (9) Å
c = 24.401 (3) Å
V = 6655.8 (10) Å³*Z* = 16
Mo *K*α radiation
 μ = 0.08 mm⁻¹
T = 273 K
0.31 × 0.25 × 0.19 mm*Data collection*Bruker SMART CCD area-detector diffractometer
Absorption correction: multi-scan (*SADABS*; Sheldrick, 1996)
*T*_{min} = 0.972, *T*_{max} = 0.98717393 measured reflections
2929 independent reflections
1610 reflections with *I* > 2σ(*I*)
*R*_{int} = 0.096*Refinement* $R[F^2 > 2\sigma(F^2)]$ = 0.072
 $wR(F^2)$ = 0.255
S = 1.01
2929 reflections
217 parameters7 restraints
H-atom parameters constrained
 $\Delta\rho_{\text{max}}$ = 0.53 e Å⁻³
 $\Delta\rho_{\text{min}}$ = -0.47 e Å⁻³**Table 1**

Hydrogen-bond geometry (Å, °).

<i>D</i> —H··· <i>A</i>	<i>D</i> —H	H··· <i>A</i>	<i>D</i> ··· <i>A</i>	<i>D</i> —H··· <i>A</i>
N2—H2B···O2	0.86	1.95	2.635 (3)	136
O2—H2A···O1 ¹	0.82	1.87	2.688 (3)	172

Symmetry code: (i) $-y + \frac{3}{4}, x + \frac{1}{4}, z + \frac{1}{4}$.

Data collection: *SMART* (Siemens, 1996); cell refinement: *SAINTE* (Siemens, 1996); data reduction: *SAINTE*; program(s) used to solve structure: *SHELXS97* (Sheldrick, 2008); program(s) used to refine structure: *SHELXL97* (Sheldrick, 2008); molecular graphics: *SHELXTL* (Sheldrick, 2008); software used to prepare material for publication: *SHELXTL*.

The authors thank the Postgraduate Foundation of Taishan University (No. Y07-2-15) for financial support.

Supplementary data and figures for this paper are available from the IUCr electronic archives (Reference: RK2128).

References

- Chang, J.-G. (2008). *Acta Cryst.* **E64**, o198.
 Huo, L.-H., Gao, S., Zhao, H., Zhao, J.-G., Zain, S. M. & Ng, S. W. (2004). *Acta Cryst.* **E60**, o1538–o1540.
 Sheldrick, G. M. (1996). *SADABS*. University of Göttingen, Germany.
 Sheldrick, G. M. (2008). *Acta Cryst.* **A64**, 112–122.
 Siemens (1996). *SMART* and *SAINTE*. Siemens Analytical X-ray Instruments Inc., Madison, Wisconsin, USA.

supplementary materials

Acta Cryst. (2009). E65, o659 [doi:10.1107/S1600536809006916]

N'-(Diphenylmethylene)-2-hydroxybenzohydrazide

Y. Li, C. Chen, R. Yang and R. Zhao

Comment

The chemistry of 2-hydroxybenzohydrazide and its derivatives are studied because of their multiply coordination environment (Chang, 2008; Huo *et al.*, 2004). They represent a class of highly useful compounds in which the presence of O and N atom renders various hydrogen bonding motifs leading to the formation of versatile architecture in the crystal lattice. As the continue of the aspect, we study the reaction of benzophenone and 2-hydroxybenzohydrazide in the state of refluxing in ethanol.

Herein we report the molecular (Fig. 1) and crystal structures of the title compound, C₂₀H₁₆N₂O₂, which was characterized by elemental analyses too. In the structure an intramolecular N2—H2B···O2 (Fig. 1) and an intermolecular O2—H2A···O1ⁱ (Fig. 2) H-bonds were found. Symmetry code: (i) 3/4-y, 1/4+x, 1/4+z).

Experimental

Benzophenone and 2-hydroxybenzohydrazide were added to the solvent of ethanol and the mixture was stirred for 4 h at 323 K. After cooling down to the room temperature, the solution was filtered. The solvent was removed from the filtrate under vacuum and the solid residue was recrystallized from ether; colourless crystals suitable for X-ray diffraction study were obtained. Yield, 79%. m.p. 463 K. Analysis, calculated for C₂₀H₁₆N₂O₂: C 79.19, H 5.65, N 4.62; found: C 79.36, H 5.43, N 4.35%. The elemental analyses were performed with a Perkin Elmer PE2400II instrument.

Refinement

The all H atoms were placed in idealized positions and constrained to ride on their parent atoms, with distances: N—H = 0.86 Å and O—H = 0.82 Å, C—H = 0.93 Å. The $U_{\text{iso}}(\text{H})$ values were set at $1.2U_{\text{eq}}(\text{parent C, N})$ and $1.5U_{\text{eq}}(\text{O})$.

Figures

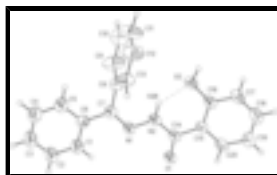


Fig. 1. The molecular structure of the title compound with the atom numbering scheme. The displacement ellipsoids are shown at 30% probability level. H atoms are presented as a small spheres of arbitrary radius. Intramolecular H-bond shown by dashed line.



Fig. 2. The one-dimensional chains are formed by the intermolecular H-bonds O2—H2···O1ⁱ. Symmetry code: (i) 3/4-y, 1/4+x, 1/4+z.

***N*'-(Diphenylmethylene)-2-hydroxybenzohydrazide**

Crystal data

$C_{20}H_{16}N_2O_2$	$Z = 16$
$M_r = 316.35$	$F_{000} = 2672$
Tetragonal, $I4_1/a$	$D_x = 1.263 \text{ Mg m}^{-3}$
Hall symbol: $-I\ 4ad$	Mo $K\alpha$ radiation
$a = 16.5157(9) \text{ \AA}$	$\lambda = 0.71073 \text{ \AA}$
$b = 16.5157(9) \text{ \AA}$	Cell parameters from 3007 reflections
$c = 24.401(3) \text{ \AA}$	$\theta = 2.4\text{--}20.0^\circ$
$\alpha = 90^\circ$	$\mu = 0.08 \text{ mm}^{-1}$
$\beta = 90^\circ$	$T = 273 \text{ K}$
$\gamma = 90^\circ$	Block, colourless
$V = 6655.8(10) \text{ \AA}^3$	$0.31 \times 0.25 \times 0.19 \text{ mm}$

Data collection

Bruker SMART CCD area-detector diffractometer	2929 independent reflections
Radiation source: Fine-focus sealed tube	1610 reflections with $I > 2\sigma(I)$
Monochromator: Graphite	$R_{\text{int}} = 0.096$
$T = 273 \text{ K}$	$\theta_{\text{max}} = 25.0^\circ$
φ and ω scans	$\theta_{\text{min}} = 1.5^\circ$
Absorption correction: Multi-scan (SADABS; Sheldrick, 1996)	$h = -19 \rightarrow 17$
$T_{\text{min}} = 0.972$, $T_{\text{max}} = 0.987$	$k = -19 \rightarrow 19$
17393 measured reflections	$l = -24 \rightarrow 28$

Refinement

Refinement on F^2	Secondary atom site location: Difmap
Least-squares matrix: Full	Hydrogen site location: Geom
$R[F^2 > 2\sigma(F^2)] = 0.072$	H-atom parameters constrained
$wR(F^2) = 0.255$	$w = 1/[\sigma^2(F_o^2) + (0.158P)^2 + 0.5238P]$
$S = 1.01$	where $P = (F_o^2 + 2F_c^2)/3$
2929 reflections	$(\Delta/\sigma)_{\text{max}} = 0.001$
217 parameters	$\Delta\rho_{\text{max}} = 0.53 \text{ e \AA}^{-3}$
7 restraints	$\Delta\rho_{\text{min}} = -0.47 \text{ e \AA}^{-3}$
Primary atom site location: Direct	Extinction correction: None

Special details

Geometry. All s.u.'s (except the s.u. in the dihedral angle between two l.s. planes) are estimated using the full covariance matrix. The cell s.u.'s are taken into account individually in the estimation of s.u.'s in distances, angles and torsion angles; correlations between s.u.'s in cell parameters are only used when they are defined by crystal symmetry. An approximate (isotropic) treatment of cell s.u.'s is used for estimating s.u.'s involving l.s. planes.

Refinement. Refinement of F^2 against ALL reflections. The weighted R -factor wR and goodness of fit S are based on F^2 , conventional R -factors R are based on F , with F set to zero for negative F^2 . The threshold expression of $F^2 > \sigma(F^2)$ is used only for calculating R -factors(gt) *etc.* and is not relevant to the choice of reflections for refinement. R -factors based on F^2 are statistically about twice as large as those based on F , and R -factors based on ALL data will be even larger.

Fractional atomic coordinates and isotropic or equivalent isotropic displacement parameters (\AA^2)

	<i>x</i>	<i>y</i>	<i>z</i>	$U_{\text{iso}}^*/U_{\text{eq}}$
N1	0.19770 (16)	0.48883 (16)	0.91131 (10)	0.0673 (8)
N2	0.20636 (16)	0.53442 (16)	0.95782 (10)	0.0660 (8)
H2B	0.1828	0.5197	0.9876	0.079*
O1	0.28234 (15)	0.62777 (14)	0.91455 (9)	0.0834 (8)
O2	0.18133 (14)	0.55740 (15)	1.06333 (8)	0.0770 (7)
H2A	0.1681	0.5493	1.0953	0.115*
C1	0.1847 (2)	0.3933 (2)	0.81748 (16)	0.0892 (12)
H1	0.2122	0.4422	0.8148	0.107*
C2	0.1798 (3)	0.3438 (3)	0.77280 (18)	0.1029 (13)
H2	0.2036	0.3596	0.7399	0.123*
C3	0.1404 (3)	0.2713 (3)	0.7760 (2)	0.1021 (14)
H3	0.1382	0.2373	0.7456	0.123*
C4	0.1046 (3)	0.2494 (3)	0.8232 (2)	0.1024 (14)
H4	0.0765	0.2007	0.8251	0.123*
C5	0.1094 (2)	0.2984 (2)	0.86910 (18)	0.0894 (12)
H5	0.0855	0.2819	0.9018	0.107*
C6	0.1494 (2)	0.3717 (2)	0.86662 (14)	0.0696 (9)
C7	0.15649 (19)	0.4228 (2)	0.91578 (13)	0.0655 (9)
C8	0.1194 (2)	0.3957 (2)	0.96790 (14)	0.0708 (9)
C9	0.0389 (3)	0.4050 (3)	0.9779 (2)	0.1276 (19)
H9	0.0055	0.4280	0.9515	0.153*
C10	0.0067 (4)	0.3801 (3)	1.0278 (3)	0.1355 (17)
H10	-0.0488	0.3835	1.0341	0.163*
C11	0.0576 (4)	0.3502 (4)	1.0679 (2)	0.150 (2)
H11	0.0368	0.3385	1.1024	0.180*
C12	0.1362 (4)	0.3380 (3)	1.0581 (2)	0.1236 (18)
H12	0.1693	0.3145	1.0845	0.148*
C13	0.1676 (3)	0.3610 (3)	1.00770 (17)	0.0944 (13)
H13	0.2223	0.3528	1.0006	0.113*
C14	0.2516 (2)	0.6023 (2)	0.95709 (12)	0.0625 (8)
C15	0.26762 (18)	0.64251 (19)	1.01038 (12)	0.0585 (8)
C16	0.2366 (2)	0.6184 (2)	1.06129 (12)	0.0648 (9)
C17	0.2630 (3)	0.6562 (3)	1.10856 (14)	0.0864 (11)

supplementary materials

H17	0.2436	0.6389	1.1423	0.104*
C18	0.3167 (3)	0.7181 (3)	1.10648 (16)	0.0967 (13)
H18	0.3334	0.7430	1.1388	0.116*
C19	0.3466 (2)	0.7445 (3)	1.05717 (16)	0.0904 (12)
H19	0.3830	0.7874	1.0557	0.108*
C20	0.3218 (2)	0.7066 (2)	1.01018 (14)	0.0752 (10)
H20	0.3422	0.7246	0.9768	0.090*

Atomic displacement parameters (\AA^2)

	U^{11}	U^{22}	U^{33}	U^{12}	U^{13}	U^{23}
N1	0.0836 (19)	0.0705 (17)	0.0477 (15)	-0.0095 (15)	0.0066 (13)	-0.0014 (12)
N2	0.0788 (18)	0.0773 (18)	0.0418 (14)	-0.0052 (14)	0.0106 (12)	0.0011 (12)
O1	0.1105 (19)	0.0922 (17)	0.0476 (13)	-0.0258 (14)	0.0190 (12)	-0.0067 (12)
O2	0.0928 (17)	0.0963 (17)	0.0417 (12)	-0.0020 (14)	0.0095 (11)	0.0066 (11)
C1	0.107 (3)	0.090 (3)	0.070 (3)	-0.021 (2)	0.003 (2)	-0.007 (2)
C2	0.128 (4)	0.108 (3)	0.073 (3)	-0.017 (3)	0.003 (2)	-0.024 (2)
C3	0.112 (3)	0.099 (3)	0.096 (3)	-0.005 (3)	-0.015 (3)	-0.027 (3)
C4	0.116 (3)	0.080 (3)	0.111 (4)	-0.016 (2)	-0.005 (3)	-0.015 (3)
C5	0.097 (3)	0.080 (3)	0.092 (3)	-0.011 (2)	0.003 (2)	-0.001 (2)
C6	0.070 (2)	0.069 (2)	0.070 (2)	-0.0040 (17)	-0.0008 (17)	-0.0007 (17)
C7	0.066 (2)	0.070 (2)	0.060 (2)	0.0028 (17)	0.0038 (15)	0.0030 (16)
C8	0.070 (2)	0.067 (2)	0.076 (2)	0.0049 (17)	0.0110 (17)	0.0075 (17)
C9	0.086 (3)	0.126 (4)	0.171 (4)	0.035 (3)	0.035 (3)	0.065 (3)
C10	0.1334 (19)	0.1375 (19)	0.1356 (19)	0.0024 (10)	0.0091 (10)	0.0072 (10)
C11	0.153 (5)	0.165 (5)	0.132 (5)	0.029 (4)	0.076 (4)	0.063 (4)
C12	0.145 (5)	0.131 (4)	0.095 (4)	0.007 (3)	0.021 (3)	0.047 (3)
C13	0.085 (3)	0.114 (3)	0.084 (3)	0.004 (2)	0.010 (2)	0.030 (2)
C14	0.0672 (19)	0.072 (2)	0.0485 (18)	0.0027 (17)	0.0073 (15)	-0.0005 (15)
C15	0.0619 (18)	0.0671 (19)	0.0464 (17)	0.0090 (16)	0.0051 (13)	-0.0028 (14)
C16	0.069 (2)	0.078 (2)	0.0472 (18)	0.0135 (18)	0.0011 (15)	0.0014 (15)
C17	0.110 (3)	0.104 (3)	0.0447 (19)	0.004 (3)	0.0011 (19)	-0.0018 (18)
C18	0.115 (3)	0.112 (3)	0.063 (3)	0.003 (3)	-0.008 (2)	-0.021 (2)
C19	0.098 (3)	0.097 (3)	0.076 (3)	-0.011 (2)	-0.001 (2)	-0.017 (2)
C20	0.080 (2)	0.088 (2)	0.058 (2)	0.005 (2)	0.0109 (17)	-0.0070 (18)

Geometric parameters (\AA , $^\circ$)

N1—C7	1.289 (4)	C8—C13	1.380 (5)
N1—N2	1.370 (3)	C9—C10	1.390 (7)
N2—C14	1.347 (4)	C9—H9	0.9300
N2—H2B	0.8600	C10—C11	1.382 (8)
O1—C14	1.230 (4)	C10—H10	0.9300
O2—C16	1.361 (4)	C11—C12	1.336 (7)
O2—H2A	0.8200	C11—H11	0.9300
C1—C2	1.365 (5)	C12—C13	1.387 (6)
C1—C6	1.380 (5)	C12—H12	0.9300
C1—H1	0.9300	C13—H13	0.9300
C2—C3	1.365 (6)	C14—C15	1.484 (4)

C2—H2	0.9300	C15—C20	1.387 (5)
C3—C4	1.345 (6)	C15—C16	1.401 (4)
C3—H3	0.9300	C16—C17	1.382 (5)
C4—C5	1.384 (6)	C17—C18	1.354 (6)
C4—H4	0.9300	C17—H17	0.9300
C5—C6	1.381 (5)	C18—C19	1.372 (5)
C5—H5	0.9300	C18—H18	0.9300
C6—C7	1.472 (4)	C19—C20	1.369 (5)
C7—C8	1.481 (4)	C19—H19	0.9300
C8—C9	1.360 (5)	C20—H20	0.9300
C7—N1—N2	116.7 (3)	C11—C10—H10	120.3
C14—N2—N1	120.3 (2)	C9—C10—H10	120.3
C14—N2—H2B	119.9	C12—C11—C10	121.2 (5)
N1—N2—H2B	119.9	C12—C11—H11	119.4
C16—O2—H2A	109.5	C10—C11—H11	119.4
C2—C1—C6	121.0 (4)	C11—C12—C13	118.8 (5)
C2—C1—H1	119.5	C11—C12—H12	120.6
C6—C1—H1	119.5	C13—C12—H12	120.6
C1—C2—C3	120.5 (4)	C8—C13—C12	121.4 (4)
C1—C2—H2	119.7	C8—C13—H13	119.3
C3—C2—H2	119.7	C12—C13—H13	119.3
C4—C3—C2	119.6 (4)	O1—C14—N2	121.7 (3)
C4—C3—H3	120.2	O1—C14—C15	120.9 (3)
C2—C3—H3	120.2	N2—C14—C15	117.4 (3)
C3—C4—C5	120.7 (4)	C20—C15—C16	117.1 (3)
C3—C4—H4	119.6	C20—C15—C14	117.0 (3)
C5—C4—H4	119.6	C16—C15—C14	125.8 (3)
C6—C5—C4	120.3 (4)	O2—C16—C17	121.1 (3)
C6—C5—H5	119.9	O2—C16—C15	119.2 (3)
C4—C5—H5	119.9	C17—C16—C15	119.7 (3)
C1—C6—C5	117.8 (3)	C18—C17—C16	121.1 (4)
C1—C6—C7	121.8 (3)	C18—C17—H17	119.5
C5—C6—C7	120.4 (3)	C16—C17—H17	119.5
N1—C7—C6	117.3 (3)	C17—C18—C19	120.6 (4)
N1—C7—C8	123.2 (3)	C17—C18—H18	119.7
C6—C7—C8	119.5 (3)	C19—C18—H18	119.7
C9—C8—C13	118.9 (4)	C20—C19—C18	118.8 (4)
C9—C8—C7	121.6 (4)	C20—C19—H19	120.6
C13—C8—C7	119.4 (3)	C18—C19—H19	120.6
C8—C9—C10	119.9 (5)	C19—C20—C15	122.6 (3)
C8—C9—H9	120.0	C19—C20—H20	118.7
C10—C9—H9	120.0	C15—C20—H20	118.7
C11—C10—C9	119.5 (5)		

Hydrogen-bond geometry (\AA , $^\circ$)

$D-H\cdots A$	$D-H$	$H\cdots A$	$D\cdots A$	$D-H\cdots A$
N2—H2B \cdots O2	0.86	1.95	2.635 (3)	136
O2—H2A \cdots O1 ⁱ	0.82	1.87	2.688 (3)	172

supplementary materials

Symmetry codes: (i) $-y+3/4, x+1/4, z+1/4$.

Fig. 1

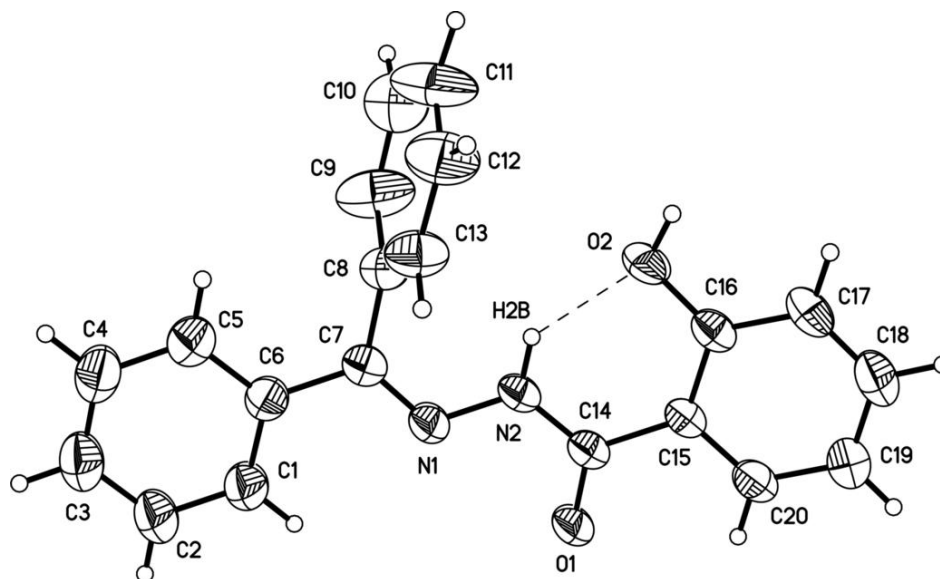


Fig. 2

